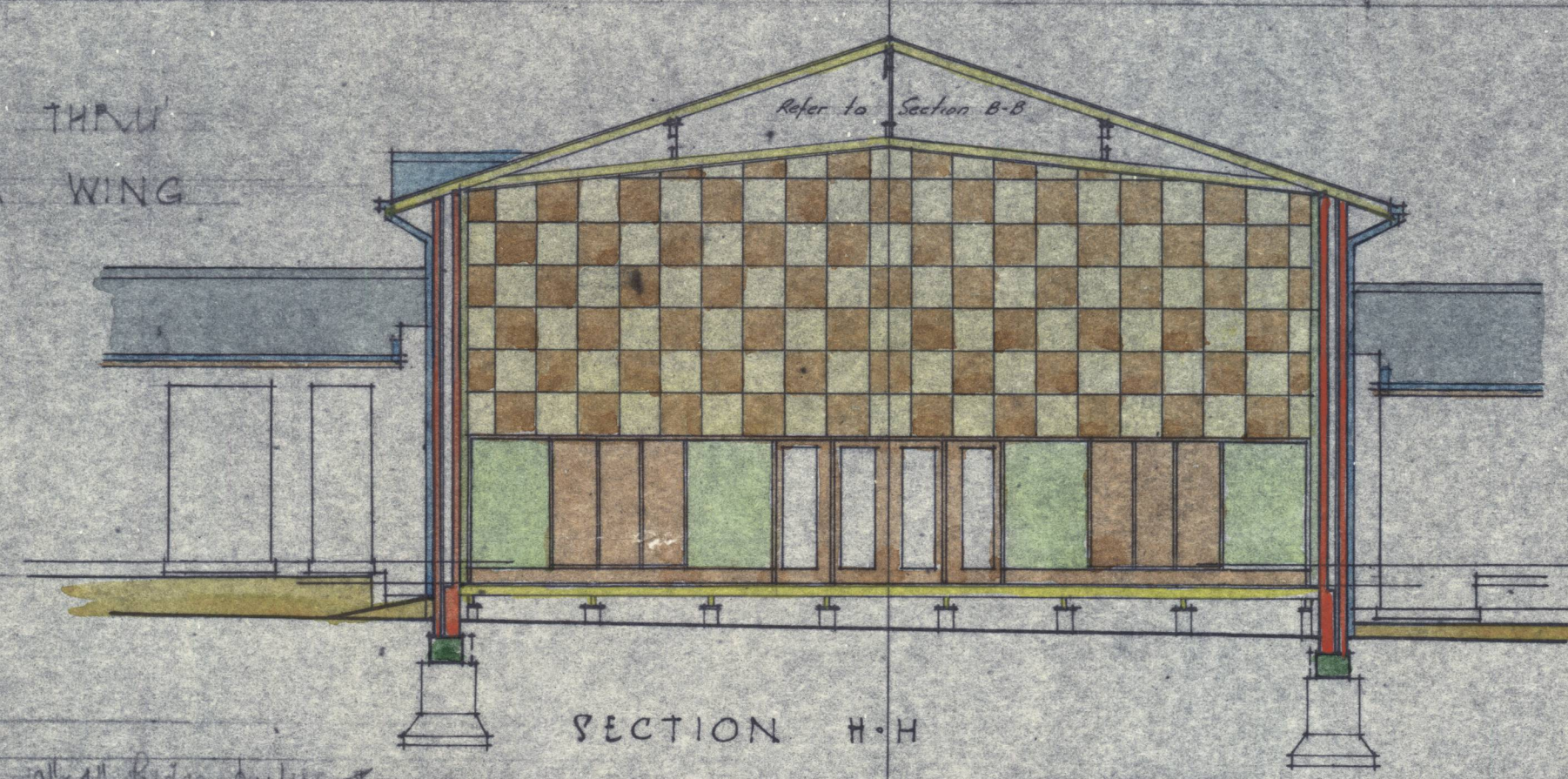
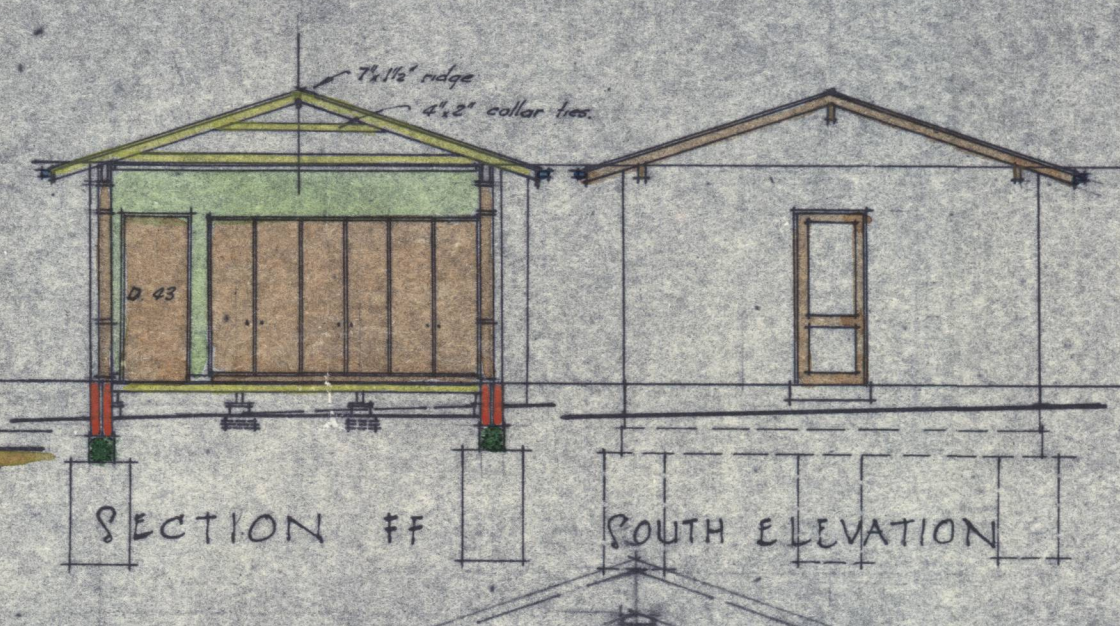


HALL FLOOR LEVEL

SECTION THRU CLASSROOM WING

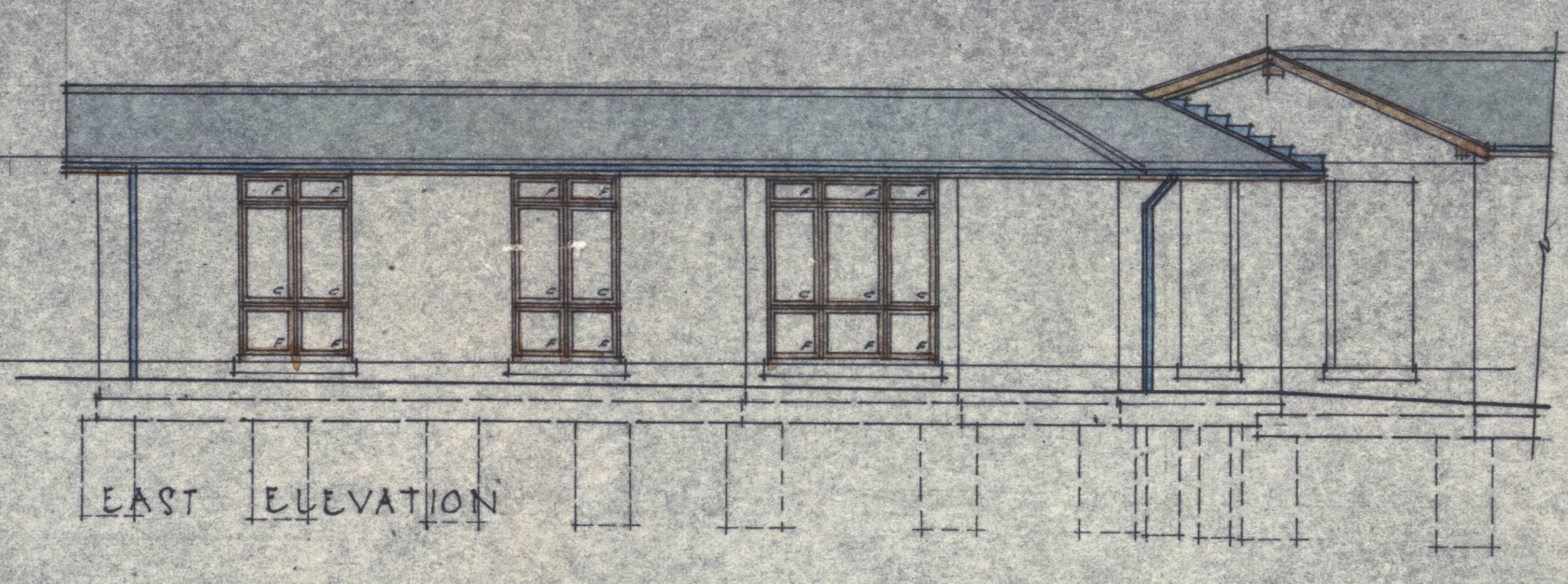


SECTION H-H



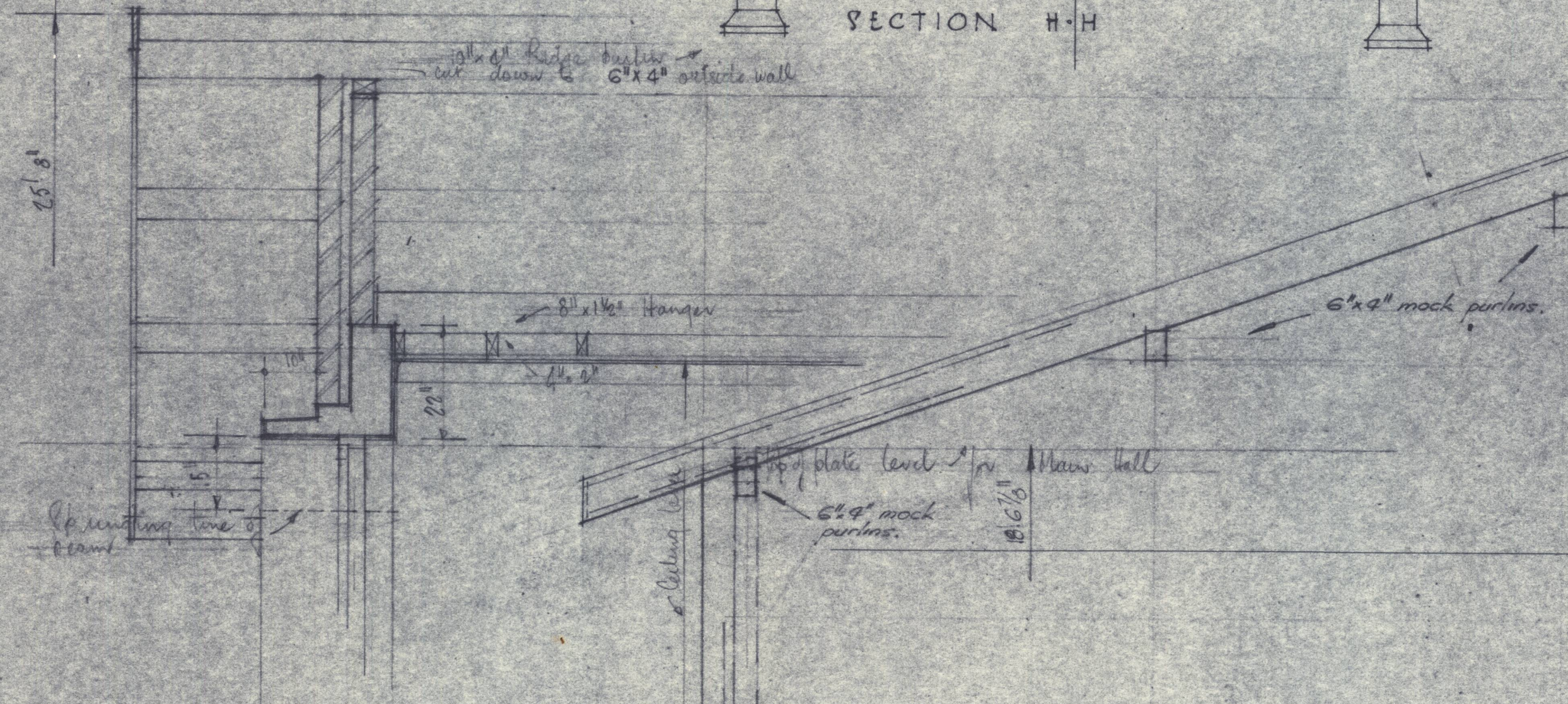
SECTION FF

SECTION THRU GUILD ROOM WING



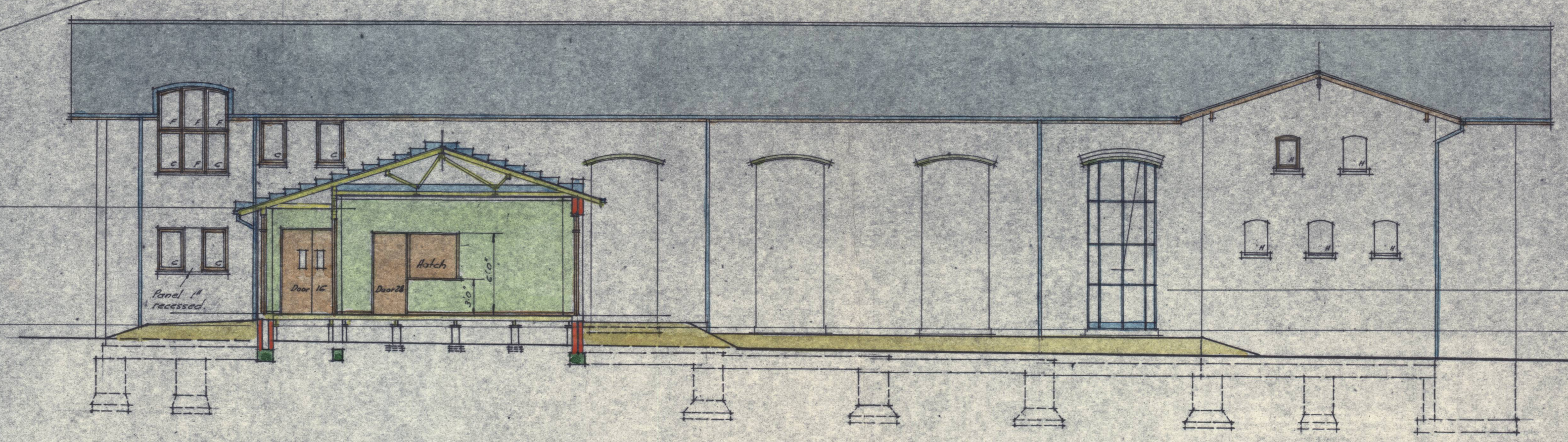
EAST ELEVATION

SOUTH ELEVATION

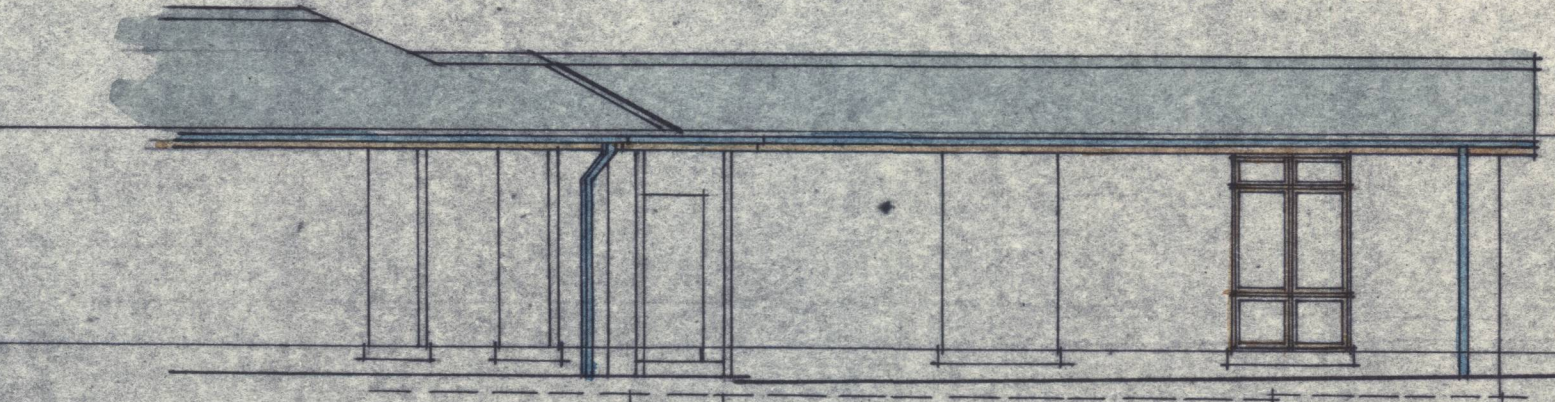


SECTION SOUTH WEST WALL

PART ELEVATION S.W. WALL



SOUTH EAST ELEVATION & SECTION E-E



WEST ELEVATION

THIS IS ONE OF THE DRAWINGS REFERRED TO IN OUR CONTRACT DATED 20<sup>th</sup> AUGUST 1957  
 MELI & EGLITIS, PTY. LTD. per *H. Glavin*  
 ST. JOHN THE BAPTIST, PARISH COUNCIL. *M. G. Chapman*  
*A. J. Chapman*

PARISH CENTRE FOR THE PARISH OF ST. JOHN THE BAPTIST - CANDENNA	DRAWING NO. 1483/3
WORKING DRAWING	DRAWN BY J.G.
SCALE 1/8" = 1'-0"	CHECKED BY <i>J.G.</i>
FOWELL, MANSFIELD & MADURCAN CHARTERED ARCHITECTS 40 MILLER STREET, NORTH SYDNEY	DATE 14.12.56
	TELEPHONE X3 1047