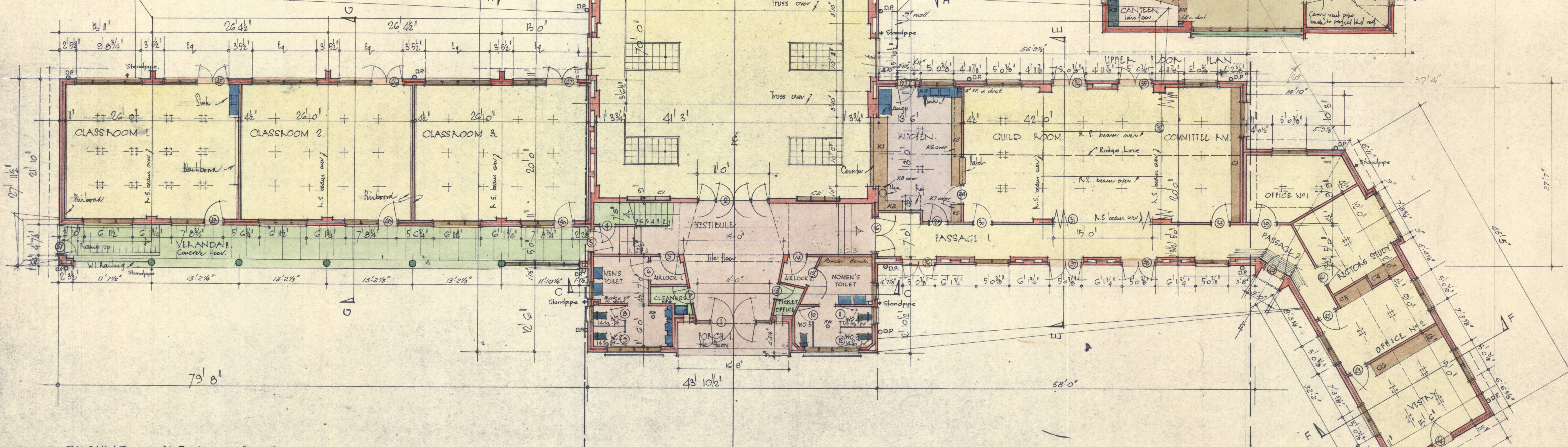


BASEMENT PLAN.



GROUND FLOOR PLAN.

SECTION B.

THIS IS ONE OF THE DRAWINGS REFERRED TO IN OUR CONTRACT DATED 20th AUGUST 1957

MELI & EQUITS PTY. LTD. PER *[Signature]* BUILDER.

ST. JOHN THE BAPTIST, PARISH COUNCIL. *[Signature]* PROPRIETOR.

PARISH CENTRE FOR THE PARISH OF ST JOHN THE BAPTIST - GAMBRIANA ACT.	1433/1
WORKING DRAWING.	<i>[Signature]</i>
SCALE 1/8" = 1'0"	DATE 5.11.56.
FOWELL, MANSFIELD & MACLURAN CHARTERED ARCHITECTS WIMBORNE ST. LONDON E.C.4.	

SECTION C.